

±41,814 SF FREESTANDING INDUSTRIAL BUILDING | AVAILABLE FOR LEASE



4001 GREYSTONE DRIVE | ONTARIO | CALIFORNIA | 91761

KEN JONES, SIOR

Senior Vice President/Principal

D • 909.373.2726

E • kjones@lee-assoc.com

DRE #01703262



Lee & Associates - Ontario

3535 Inland Empire Blvd, Ontario, CA 91764 | 909.989.7771 | lee-assoc.com | Corp ID 00976995

BEN PALITZ

Associate

D • 909.373.2910

E • bpalitz@lee-assoc.com

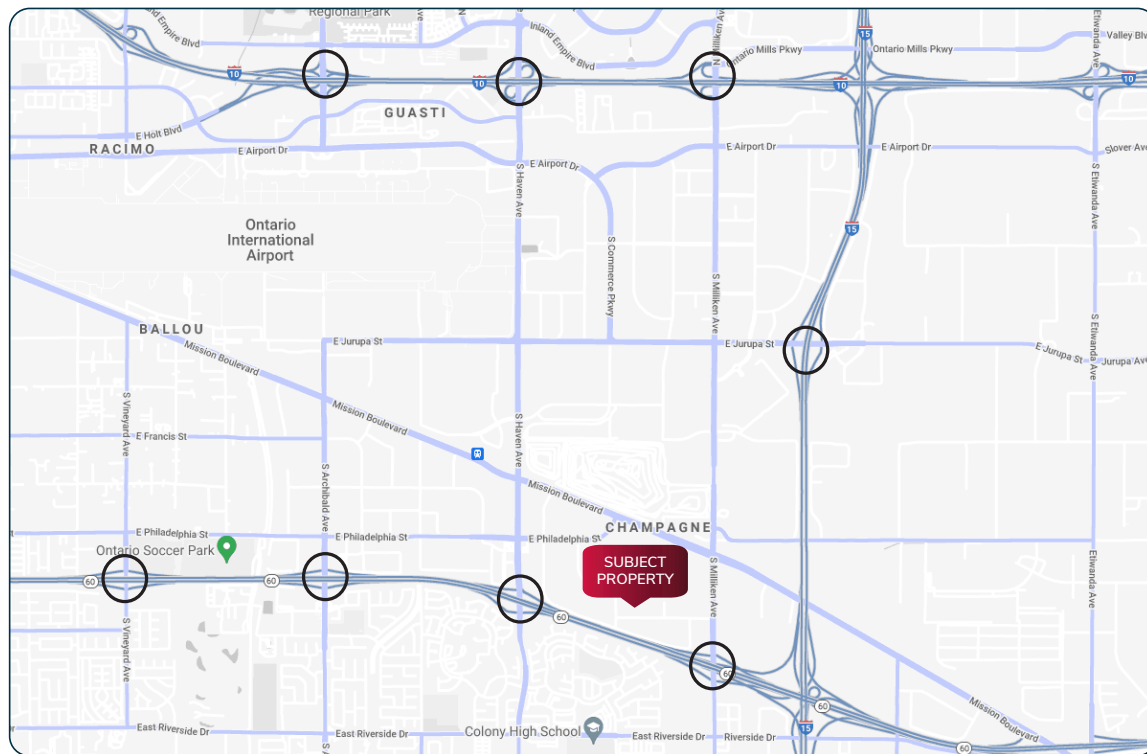
DRE #02093182

4001 GREYSTONE DRIVE | ONTARIO | CALIFORNIA | 91761

BUILDING FEATURES

- >> High Image Freestanding Facility
- >> ±41,814 SF Industrial Building
- >> ±2,906 SF of Two Story Office Space
- >> 24' Minimum Clearance Height
- >> Four (4) Dock High Doors
- >> One (1) Ground Level Door
- >> Large Fully Secured Concrete Yard Area
- >> 0.60 GPM/3,000 SF Sprinkler System
(can be upgraded to ESFR)
- >> 800 Amps, 277/480 Volts, 3 Phase
- >> Excellent Access to the I-10, I-15 and CA-60
Freeways
- >> Great Corner Lot Location

LOCATION MAP



 FREEWAY RAMPS

KEN JONES, SIOR

Senior Vice President/Principal
 D • 909.373.2726
 E • kjones@lee-assoc.com
 DRE #01703262



Lee & Associates - Ontario

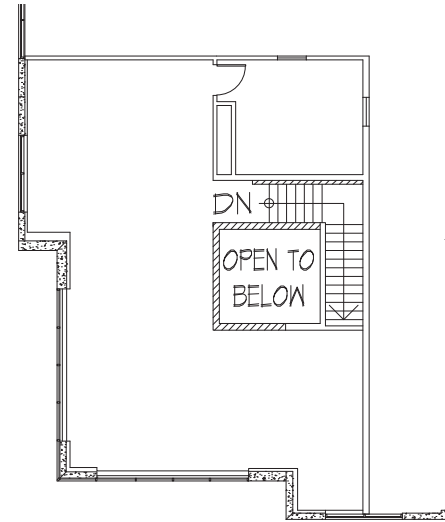
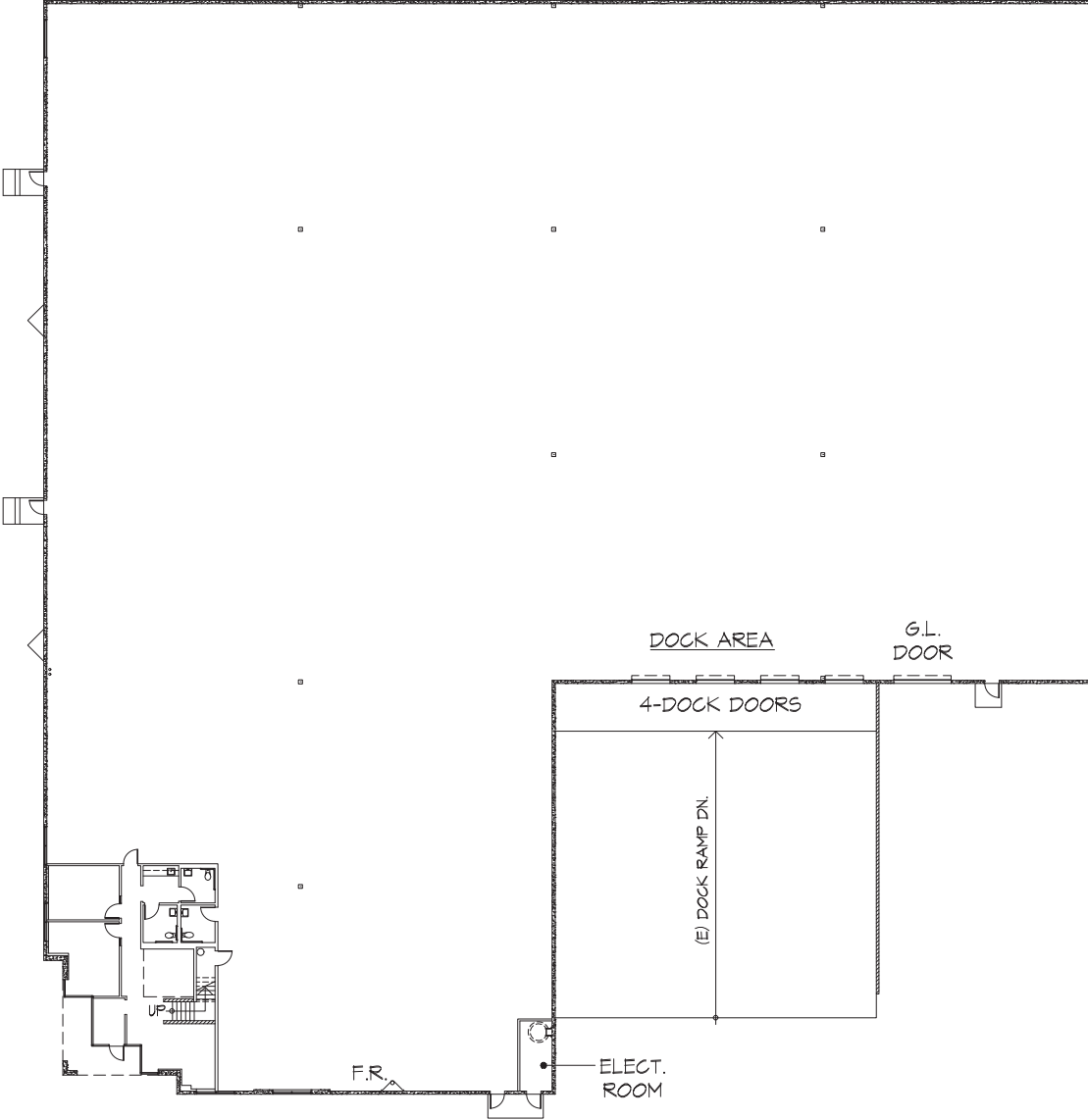
3535 Inland Empire Blvd, Ontario, CA 91764 | 909.989.7771 | lee-assoc.com | Corp ID 00976995

BEN PALITZ

Associate
 D • 909.373.2910
 E • bpalitz@lee-assoc.com
 DRE #02093182

4001 GREYSTONE DRIVE | ONTARIO | CALIFORNIA | 91761

BUILDING FLOOR PLAN



SECOND FLOOR MEZZANINE SPACE

KEN JONES, SIOR
 Senior Vice President/Principal
 D • 909.373.2726
 E • kjones@lee-assoc.com
 DRE #01703262



Lee & Associates - Ontario
 3535 Inland Empire Blvd, Ontario, CA 91764 | 909.989.7771 | lee-assoc.com | Corp ID 00976995

BEN PALITZ
 Associate
 D • 909.373.2910
 E • bpalitz@lee-assoc.com
 DRE #02093182

±41,814 SF FREESTANDING INDUSTRIAL BUILDING | AVAILABLE FOR LEASE

4001 GREYSTONE DRIVE | ONTARIO | CALIFORNIA | 91761

PROPERTY AERIAL



KEN JONES, SIOR
Senior Vice President/Principal
D • 909.373.2726
E • kjones@lee-assoc.com
DRE #01703262



Lee & Associates - Ontario

3535 Inland Empire Blvd, Ontario, CA 91764 | 909.989.7771 | lee-assoc.com | Corp ID 00976995

BEN PALITZ
Associate
D • 909.373.2910
E • bpalitz@lee-assoc.com
DRE #02093182