

AVAILABLE FOR SALE OR LEASE

±52,207 SF BUILDING ON ±3.4 ACRES OF LAND

5867 JASMINE STREET

RIVERSIDE, CALIFORNIA



KEN JONES, SIOR

SENIOR VICE PRESIDENT/PRINCIPAL
909.373.2726
kjones@lee-assoc.com
DRE #01703262

BEN PALITZ

SENIOR VICE PRESIDENT/PRINCIPAL
909.373.2910
bpalitz@lee-assoc.com
DRE #02093182

JEFF BISCHOFBERGER

SENIOR VICE PRESIDENT/PRINCIPAL
909.373.2708
jbischof@lee-assoc.com
DRE #01512151

LEE & ASSOCIATES - ONTARIO

3535 Inland Empire Boulevard
Ontario, California 91764
(909) 989-7771 | lee-associates.com
CORPORATE ID #00976995



±52,207 SQUARE FEET AVAILABLE FOR SALE OR LEASE

5867 JASMINE STREET RIVERSIDE, CALIFORNIA

PROPERTY FEATURES

- ±52,207 SQUARE FOOT BUILDING
- ±4,000 SQUARE FEET OF OFFICE SPACE (VERIFY)
- OFFICE & WAREHOUSE RESTROOMS
- ±3.4 ACRES OF LAND (±148,104 SQUARE FEET)
- SIX (6) DOCK HIGH DOORS WITH MECHANICAL PIT LEVELERS
- THREE (3) GROUND LEVEL LOADING DOORS
- 20' TO 22' WAREHOUSE CLEARANCE HEIGHT
- FIRE SPRINKLERED
- 3,000 AMPS OF POWER, 277/480 VOLTS, 3 PHASE (VERIFY)
- FULLY FENCED, PAVED AND SECURED YARD AREA
- UNION PACIFIC RAIL POSSIBLE (VERIFY)
- BUILDING REHAB COMPLETED IN 2018
- COVERED DOCK PLATFORM
- TWO ACCESS POINTS FROM JASMINE STREET AND GAGE STREET
- SOLAR PANELS INSTALLED
- EXCELLENT MANUFACTURING BUILDING
- ZONED BUSINESS AND MANUFACTURING PARK VIA THE CITY OF RIVERSIDE



KEN JONES, SIOR
SENIOR VICE PRESIDENT/PRINCIPAL
909.373.2726
kjones@lee-assoc.com
DRE #01703262

BEN PALITZ
SENIOR VICE PRESIDENT/PRINCIPAL
909.373.2910
bpalitz@lee-assoc.com
DRE #02093182

JEFF BISCHOFBERGER
SENIOR VICE PRESIDENT/PRINCIPAL
909.373.2708
jbischof@lee-assoc.com
DRE #01512151

LEE & ASSOCIATES - ONTARIO
3535 Inland Empire Boulevard
Ontario, California 91764
(909) 989-7771 | lee-associates.com
CORPORATE ID #00976995

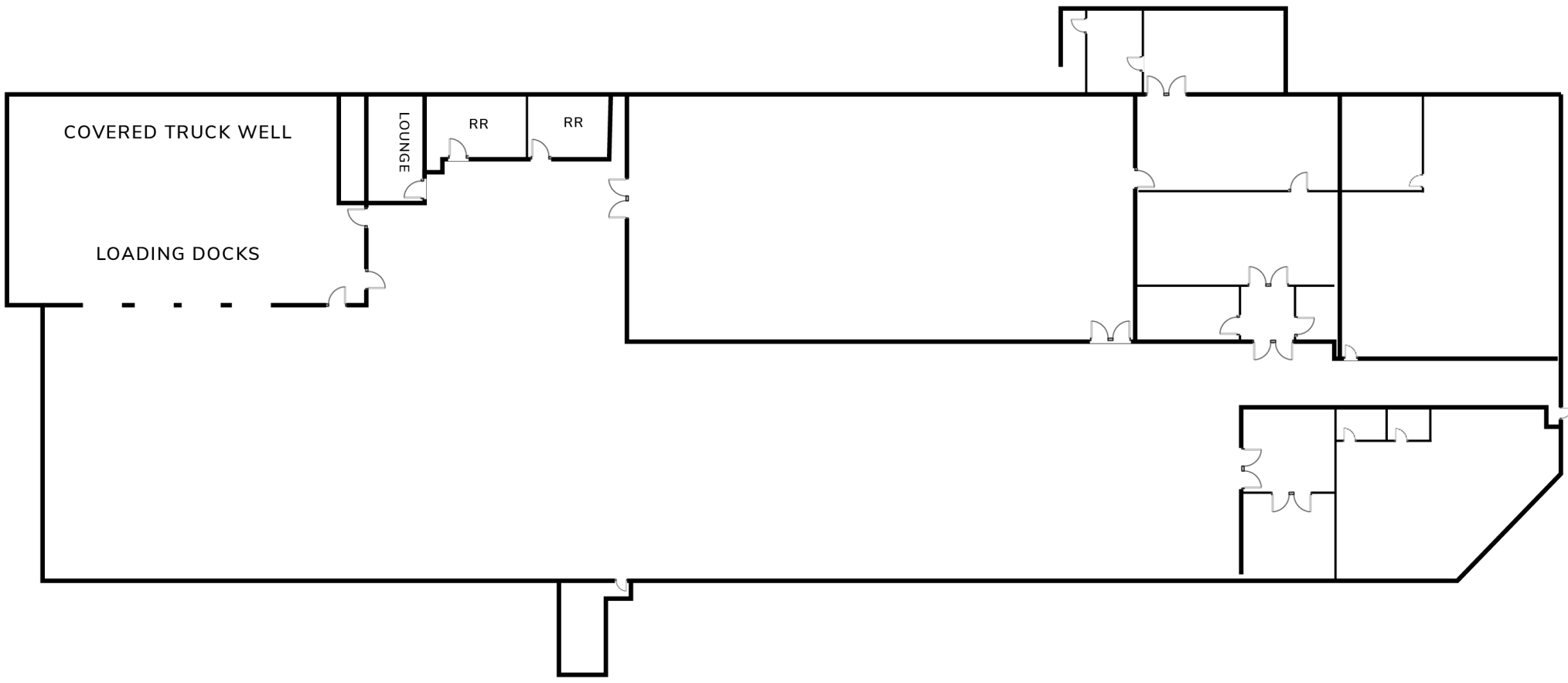
LEE & ASSOCIATES
COMMERCIAL REAL ESTATE SERVICES
ONTARIO

**±52,207 SQUARE FEET AVAILABLE
FOR SALE OR LEASE**

**5867 JASMINE STREET
RIVERSIDE, CALIFORNIA**

FIRST FLOOR FLOORPLAN

NOT TO SCALE



KEN JONES, SIOR
SENIOR VICE PRESIDENT/PRINCIPAL
909.373.2726
kjones@lee-assoc.com
DRE #01703262

BEN PALITZ
SENIOR VICE PRESIDENT/PRINCIPAL
909.373.2910
bpalitz@lee-assoc.com
DRE #02093182

JEFF BISCHOFBERGER
SENIOR VICE PRESIDENT/PRINCIPAL
909.373.2708
jbischof@lee-assoc.com
DRE #01512151

LEE & ASSOCIATES - ONTARIO
3535 Inland Empire Boulevard
Ontario, California 91764
(909) 989-7771 | lee-associates.com
CORPORATE ID #00976995

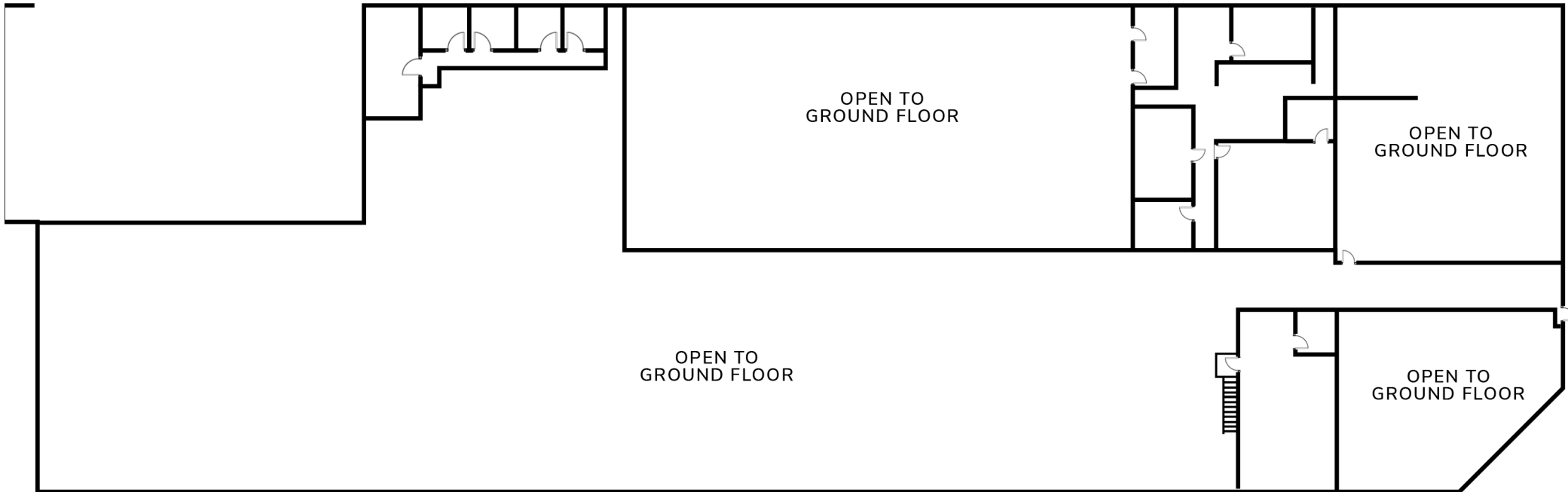


All information furnished regarding property for sale, rental or financing is from sources deemed reliable, but no warranty or representation is made to the accuracy thereof and same is submitted to errors, omissions, change of price, rental or other conditions prior to sale, lease or financing or withdrawal without notice. No liability of any kind is to be imposed on the broker herein.

**±52,207 SQUARE FEET AVAILABLE
FOR SALE OR LEASE**

**5867 JASMINE STREET
RIVERSIDE, CALIFORNIA**

SECOND FLOOR FLOORPLAN
NOT TO SCALE



KEN JONES, SIOR
SENIOR VICE PRESIDENT/PRINCIPAL
909.373.2726
kjones@lee-assoc.com
DRE #01703262

BEN PALITZ
SENIOR VICE PRESIDENT/PRINCIPAL
909.373.2910
bpalitz@lee-assoc.com
DRE #02093182

JEFF BISCHOFBERGER
SENIOR VICE PRESIDENT/PRINCIPAL
909.373.2708
jbischof@lee-assoc.com
DRE #01512151

LEE & ASSOCIATES - ONTARIO
3535 Inland Empire Boulevard
Ontario, California 91764
(909) 989-7771 | lee-associates.com
CORPORATE ID #00976995



All information furnished regarding property for sale, rental or financing is from sources deemed reliable, but no warranty or representation is made to the accuracy thereof and same is submitted to errors, omissions, change of price, rental or other conditions prior to sale, lease or financing or withdrawal without notice. No liability of any kind is to be imposed on the broker herein.

**±52,207 SQUARE FEET AVAILABLE
FOR SALE OR LEASE**

**5867 JASMINE STREET
RIVERSIDE, CALIFORNIA**

PROPERTY
AERIAL



KEN JONES, SIOR
SENIOR VICE PRESIDENT/PRINCIPAL
909.373.2726
kjones@lee-assoc.com
DRE #01703262

BEN PALITZ
SENIOR VICE PRESIDENT/PRINCIPAL
909.373.2910
bpalitz@lee-assoc.com
DRE #02093182

JEFF BISCHOFBERGER
SENIOR VICE PRESIDENT/PRINCIPAL
909.373.2708
jbischof@lee-assoc.com
DRE #01512151

LEE & ASSOCIATES - ONTARIO
3535 Inland Empire Boulevard
Ontario, California 91764
(909) 989-7771 | lee-associates.com
CORPORATE ID #00976995

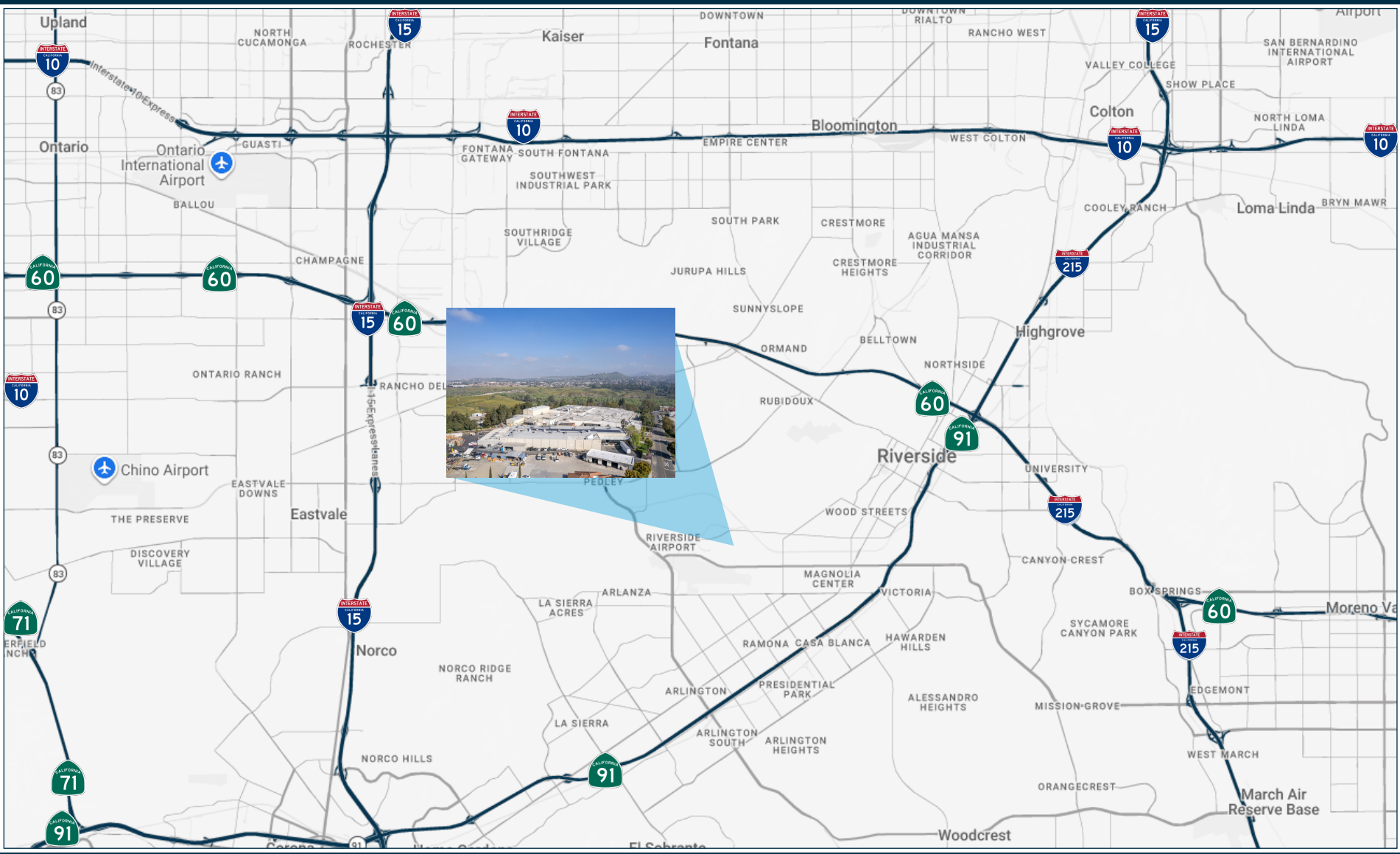


All information furnished regarding property for sale, rental or financing is from sources deemed reliable, but no warranty or representation is made to the accuracy thereof and same is submitted to errors, omissions, change of price, rental or other conditions prior to sale, lease or financing or withdrawal without notice. No liability of any kind is to be imposed on the broker herein.

**±52,207 SQUARE FEET AVAILABLE
FOR SALE OR LEASE**

**5867 JASMINE STREET
RIVERSIDE, CALIFORNIA**

**LOCATION
MAP**



KEN JONES, SIOR
SENIOR VICE PRESIDENT/PRINCIPAL
909.373.2726
kjones@lee-assoc.com
DRE #01703262

BEN PALITZ
SENIOR VICE PRESIDENT/PRINCIPAL
909.373.2910
bpalitz@lee-assoc.com
DRE #02093182

JEFF BISCHOFBERGER
SENIOR VICE PRESIDENT/PRINCIPAL
909.373.2708
jbischof@lee-assoc.com
DRE #01512151

LEE & ASSOCIATES - ONTARIO
3535 Inland Empire Boulevard
Ontario, California 91764
(909) 989-7771 | lee-associates.com
CORPORATE ID #00976995



All information furnished regarding property for sale, rental or financing is from sources deemed reliable, but no warranty or representation is made to the accuracy thereof and same is submitted to errors, omissions, change of price, rental or other conditions prior to sale, lease or financing or withdrawal without notice. No liability of any kind is to be imposed on the broker herein.

5867 JASMINE STREET

RIVERSIDE, CALIFORNIA

FOR MORE INFORMATION, PLEASE CONTACT:

KEN JONES, SIOR

SENIOR VICE PRESIDENT/PRINCIPAL

909.373.2726

kjones@lee-assoc.com

DRE #01703262

BEN PALITZ

SENIOR VICE PRESIDENT/PRINCIPAL

909.373.2910

bpalitz@lee-assoc.com

DRE #02093182

JEFF BISCHOFBERGER

SENIOR VICE PRESIDENT/PRINCIPAL

909.373.2708

jbischof@lee-assoc.com

DRE #01512151

LEE & ASSOCIATES - ONTARIO

3535 Inland Empire Boulevard | Ontario, California 91764

(909) 989-7771 | lee-assoc.com

Corporate ID: 00976995



COMMERCIAL REAL ESTATE SERVICES
ONTARIO